

# Kawagoe Town Storm Surge Hazard Map ①

This storm surge hazard map depicts the **assumed inundation area** due to flooding caused by the largest storm surge (simulation of typhoons of the Muroto Typhoon class, the largest typhoon in history, setting multiple routes that have a large impact on various parts of the prefecture) that can be assumed, as specified in the Flood Control Act, and the **expected inundation depth if the area is flooded**. Since the simulation is based on an assumption, flooding could also occur in areas this map does not specify as flood area. Also, actual flood level may differ from the estimation result. Please check the estimated inundation depth in your area and evacuation sites so that you can take action to ensure your safety when the risk of flooding due to a storm surge increases, and prepare for disasters.

## Expected inundation area and inundation depth

### Legend

Designated emergency evacuation sites when a storm surge occurs

Designated emergency evacuation sites

Facilities for people requiring special care

- Facilities for elderly/disabled, child welfare facilities, kindergartens

Disaster prevention related facilities, etc.

- Town hall
- Police box
- Fire station
- Disaster prevention camera
- Water level station, water level gauge

### Inundation depth

Inundation depth when the estimated maximum class of storm surge occurs

- 10.0 m - below 20.0 m area
- 5.0 m - below 10.0 m area
- 3.0 m - below 5.0 m area
- 1.0 m - below 3.0 m area
- 0.5 m - below 1.0 m area
- 0.3 m - below 0.5 m area
- Below 0.3 m area

### Other hazardous area

- Underpass (underground road)

### Designated emergency evacuation sites when a storm surge occurs

No.	Facilities	Evacuation floor
1	Kamezaki Community Center	
2	Toyoda Community Center	2 <sup>nd</sup> floor and above
3	Kawagoe-cho General Gymnasium	2 <sup>nd</sup> floor and above
4	Kawagoe-cho Elementary School	3 <sup>rd</sup> floor and above
5	Kawagoeminami Elementary School	3 <sup>rd</sup> floor and above
6	Kawagoe Junior High School	3 <sup>rd</sup> floor and above
7	Kawagoe-cho Ikiki Center	3 <sup>rd</sup> floor and above
8	Kawagoe-cho Aiai Center	3 <sup>rd</sup> floor and above
9	Main Building of Northern Water Purification Center	2 <sup>nd</sup> floor and above
10	Kawagoe High School	2 <sup>nd</sup> floor and above

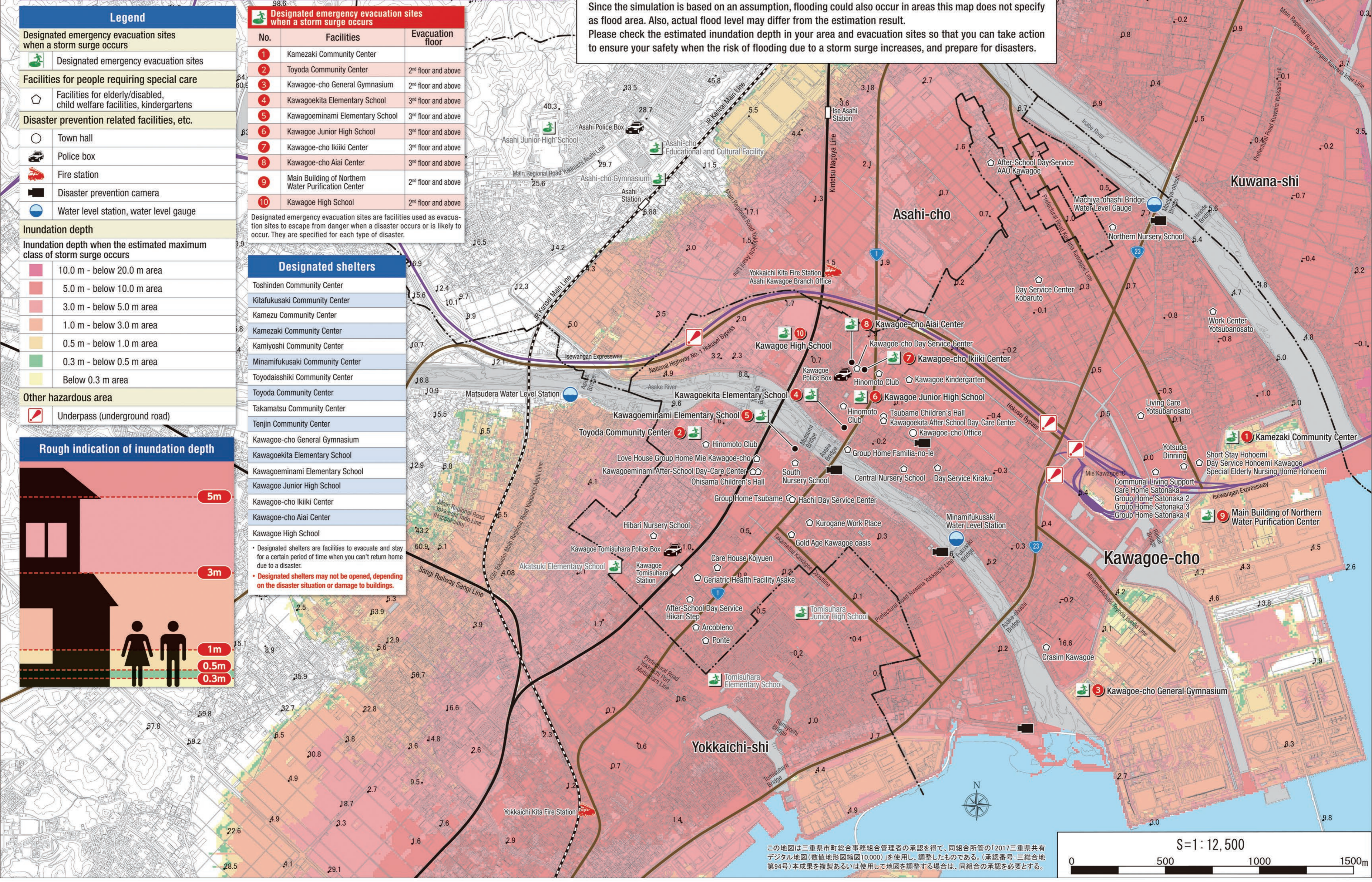
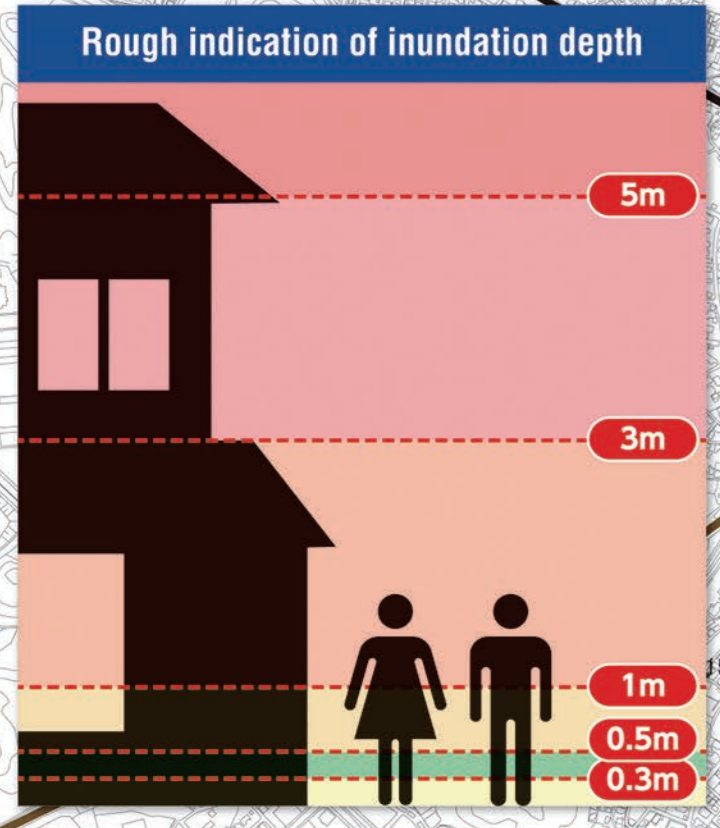
Designated emergency evacuation sites are facilities used as evacuation sites to escape from danger when a disaster occurs or is likely to occur. They are specified for each type of disaster.

### Designated shelters

- Toshinden Community Center
- Kitafukusaki Community Center
- Kamezu Community Center
- Kamezaki Community Center
- Kamiyoshi Community Center
- Minamifukusaki Community Center
- Toyodaisshiki Community Center
- Toyoda Community Center
- Takamatsu Community Center
- Tenjin Community Center
- Kawagoe-cho General Gymnasium
- Kawagoe-cho Elementary School
- Kawagoeminami Elementary School
- Kawagoe Junior High School
- Kawagoe-cho Ikiki Center
- Kawagoe-cho Aiai Center
- Kawagoe High School

Designated shelters are facilities to evacuate and stay for a certain period of time when you can't return home due to a disaster.

Designated shelters may not be opened, depending on the disaster situation or damage to buildings.



S=1:12,500

0 500 1000 1500m

この地図は三重県市町総合事務組合管理者の承認を得て、同組合所管の「2017三重県共有デジタル地図(数値地形図縮尺10,000)」を使用し、調整したものである。(承認番号:三総合地第94号)本成果を複製あるいは使用して地図を調整する場合は、同組合の承認を必要とする。

# Kawagoe Town Storm Surge Hazard Map ②

This hazard map shows the **duration of inundation with a depth of 50 cm or more** during a storm surge. During flooding, there is a risk of power outages, and the stoppage of functions necessary for daily life, such as water supply and sewerage. Therefore, use this hazard map to **determine vertical evacuation and select evacuation sites**.

## Inundation duration

### Legend

Designated emergency evacuation sites when a storm surge occurs

Designated emergency evacuation sites

Facilities for people requiring special care

- Facilities for elderly/disabled, child welfare facilities, kindergartens

Disaster prevention related facilities, etc.

- Town hall
- Police box
- Fire station
- Disaster prevention camera
- Water level station, water level gauge

### Inundation duration (inundation depth 0.5 m or more)

- 1 week -
- 3 days - 1 week
- 1 - 3 days
- 12 hours - 1 day
- 12 hours

### Other hazardous area

- Underpass (underground road)

### Designated emergency evacuation sites when a storm surge occurs

No.	Facilities	Evacuation floor
1	Kamezaki Community Center	
2	Toyoda Community Center	2 <sup>nd</sup> floor and above
3	Kawagoe-cho General Gymnasium	2 <sup>nd</sup> floor and above
4	Kawagoe-cho Elementary School	3 <sup>rd</sup> floor and above
5	Kawagoeminami Elementary School	3 <sup>rd</sup> floor and above
6	Kawagoe Junior High School	3 <sup>rd</sup> floor and above
7	Kawagoe-cho Ikiki Center	3 <sup>rd</sup> floor and above
8	Kawagoe-cho Aiai Center	3 <sup>rd</sup> floor and above
9	Main Building of Northern Water Purification Center	2 <sup>nd</sup> floor and above
10	Kawagoe High School	2 <sup>nd</sup> floor and above

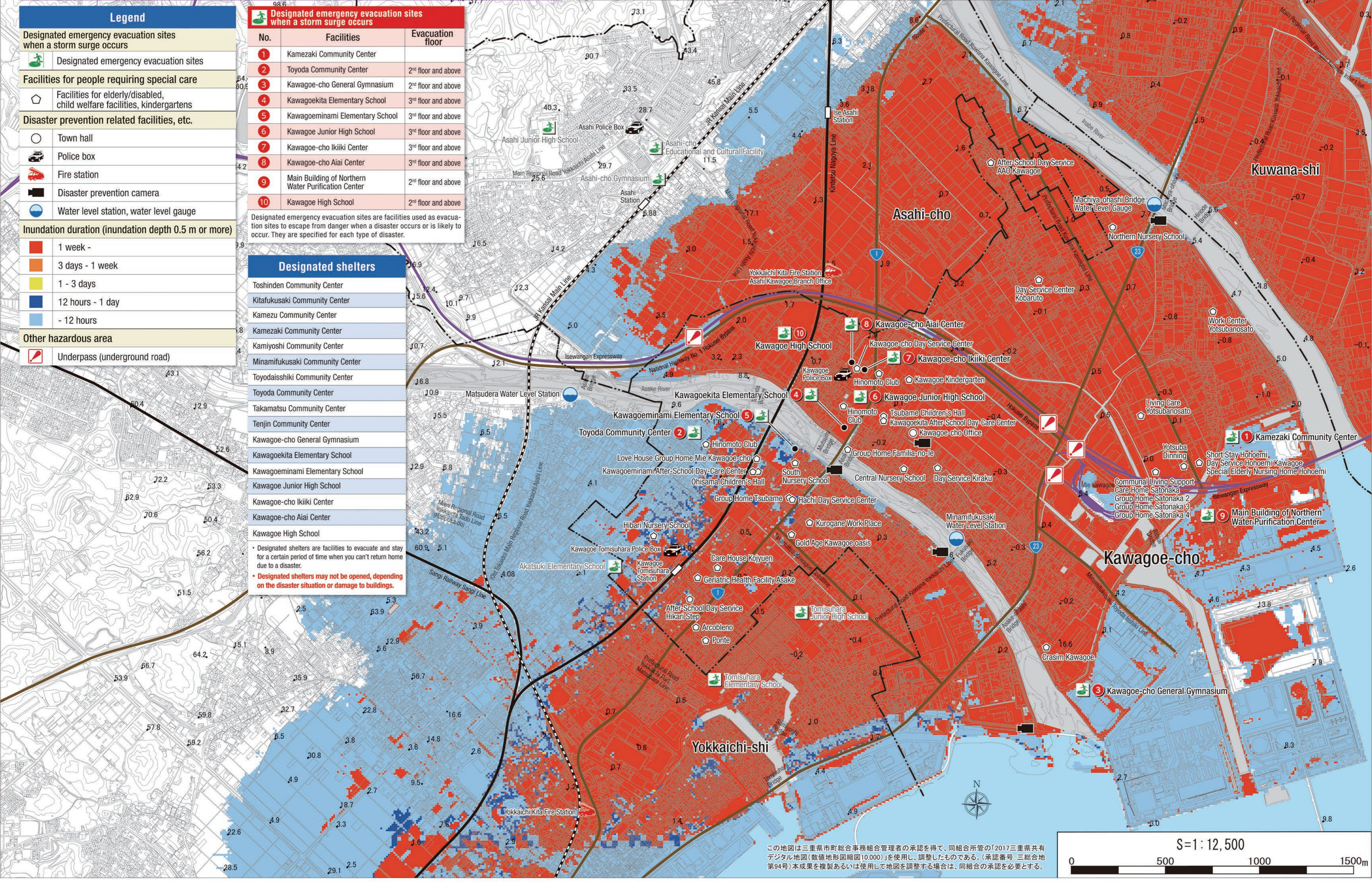
Designated emergency evacuation sites are facilities used as evacuation sites to escape from danger when a disaster occurs or is likely to occur. They are specified for each type of disaster.

### Designated shelters

- Toshinden Community Center
- Kitafukusaki Community Center
- Kamezu Community Center
- Kamezaki Community Center
- Kamiyoshi Community Center
- Minamifukusaki Community Center
- Toyodaisshiki Community Center
- Toyoda Community Center
- Takamatsu Community Center
- Tenjin Community Center
- Kawagoe-cho General Gymnasium
- Kawagoe-cho Elementary School
- Kawagoeminami Elementary School
- Kawagoe Junior High School
- Kawagoe-cho Ikiki Center
- Kawagoe-cho Aiai Center
- Kawagoe High School

Designated shelters are facilities to evacuate and stay for a certain period of time when you can't return home due to a disaster.

Designated shelters may not be opened, depending on the disaster situation or damage to buildings.



S=1:12,500

0 500 1000 1500m

この地図は三重県市町総合事務組合管理者の承認を得て、同組合所管の「2017三重県共有デジタル地図(数値地形図縮尺10,000)」を使用し、調整したものである。(承認番号:三総合地第94号)本成果を複製あるいは使用して地図を調整する場合は、同組合の承認を必要とする。