

Kawagoe Town Tsunami Hazard Map ①

This tsunami hazard map is based on the "Theoretical largest class earthquake in the Nankai Trough" based on the results from the earthquake damage estimation survey (Related to hazards) announced by Mie Prefecture in March 2014. As this diagram assumes a tsunami caused by maximum class earthquake that is theoretically possible, **it does not show the magnitude of coming tsunami that could occur in the future. Without being restricted by assumptions, prioritize escaping from a tsunami and evacuate to the areas indicated by the red arrows.** In addition, **check the expected inundation depth in your home and evacuation sites on this map so that you can take action to ensure safety when a tsunami occurs, and prepare for disasters.**

Tsunami flooding is assumed to reach **the red dashed border.**

Evacuate to the direction indicated by **the red arrows.**

Expected inundation area and inundation depth

Legend

Designated emergency evacuation sites when a tsunami occurs

- Designated emergency evacuation sites
- Tsunami evacuation building

Disaster prevention related facilities, etc.

- Police box
- Fire station
- Disaster prevention camera

Inundation depth

- 10.0m - 20.0m
- 5.0m - 10.0m
- 2.0m - 5.0m
- 1.0m - 2.0m
- 0.3m - 1.0m
- 0.01m - 0.3m

Expected tsunami inundation border

- Boundary line of expected inundation area due to the expected maximum class of tsunami flood

River channel

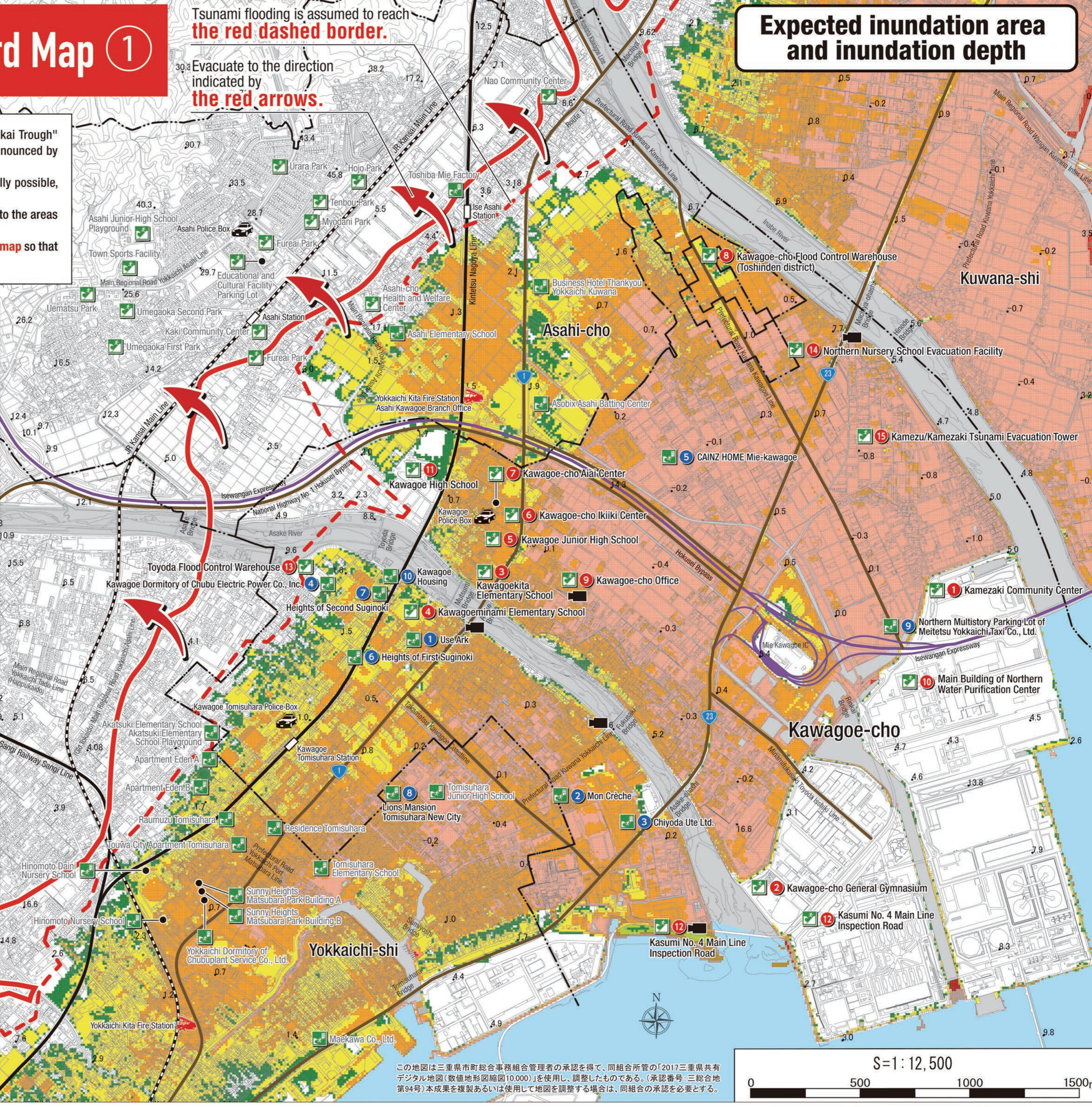
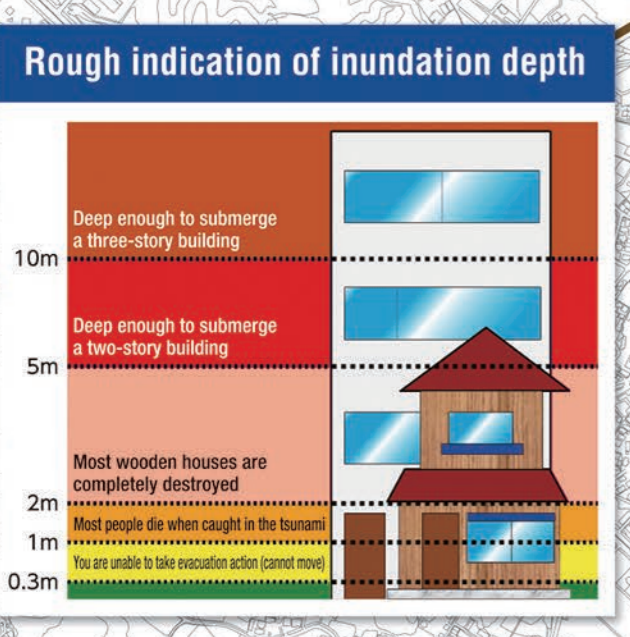
- Areas where tsunami are predicted to flow upstream

Designated emergency evacuation sites for tsunami

No.	Facilities	Evacuation floor
1	Kamezaki Community Center	
2	Kawagoe-cho General Gymnasium	
3	Kawagoekita Elementary School	2 nd floor and above
4	Kawagoeminami Elementary School	2 nd floor and above
5	Kawagoe Junior High School	2 nd floor and above
6	Kawagoe-cho Ikiki Center	2 nd floor and above
7	Kawagoe-cho Aiai Center	2 nd floor and above
8	Kawagoe-cho Flood Control Warehouse (Toshinden district)	Roof top
9	Kawagoe-cho Office	2 nd floor and above
10	Main Building of Northern Water Purification Center	
11	Kawagoe High School	2 nd floor and above
12	Kasumi No. 4 Main Line Inspection Road	
13	Toyoda Flood Control Warehouse	3 rd floor and above
14	Northern Nursery School Evacuation Facility	Roof top
15	Kamezu/Kamezaki Tsunami Evacuation Tower	2 nd floor and above

Tsunami evacuation building

No.	Name of building	Number of floors	Evacuation floor
1	Use Ark	4	2 nd floor and above
2	Mon Crèche	7	2 nd floor and above
3	Chiyoda Ute Ltd.	Partly 4	2 nd floor and above
4	Kawagoe Dormitory of Chubu Electric Power Co., Inc.	4	2 nd floor and above
5	CAINZ HOME Mie-kawagoe	2	2 nd floor and above
6	Heights of First Suginoki	4	2 nd floor and above
7	Heights of Second Suginoki	5	2 nd floor and above
8	Lions Mansion Tomisuhara New City	9 - 13 - 14	4 th floor and above
9	Northern Multistory Parking Lot of Meitetsu Yokkaichi Taxi Co., Ltd.	2	Roof top
10	Kawagoe Housing	4	2 nd floor and above



S=1:12,500
0 500 1000 1500m

Kawagoe Town Tsunami Hazard Map ②

This hazard map shows the time at which an inundation depth due to tsunami reaches 30 cm after an earthquake occurs. Even if the depth of flood of the tsunami is shallow, it is possible that it could cause you to get stuck, or draw you out to sea. **So complete your evacuation before the tsunami reaches your location.**

Tsunami flooding is assumed to reach **the red dashed border.**

Evacuate to the direction indicated by **the red arrows.**

Predicted arrival time of inundation depth of 30 cm

Legend

Designated emergency evacuation sites when a tsunami occurs

- Designated emergency evacuation sites
- Tsunami evacuation building

Disaster prevention related facilities, etc.

- Police box
- Fire station
- Disaster prevention camera

Predicted arrival time of tsunami inundation depth of 30 cm

Predicted arrival time of tsunami inundation depth of 30 cm caused by the theoretical largest class earthquake in the Nankai Trough

- 00 minutes - 10 minutes
- 10 minutes - 15 minutes
- 15 minutes - 20 minutes
- 20 minutes - 25 minutes
- 25 minutes - 30 minutes
- 30 minutes - 40 minutes
- 40 minutes - 60 minutes
- 60 minutes - 90 minutes
- 90 minutes - 720 minutes

Expected tsunami inundation border

- Boundary line of expected inundation area due to the expected maximum class of tsunami flood

River channel

- Areas where tsunami are predicted to flow upstream

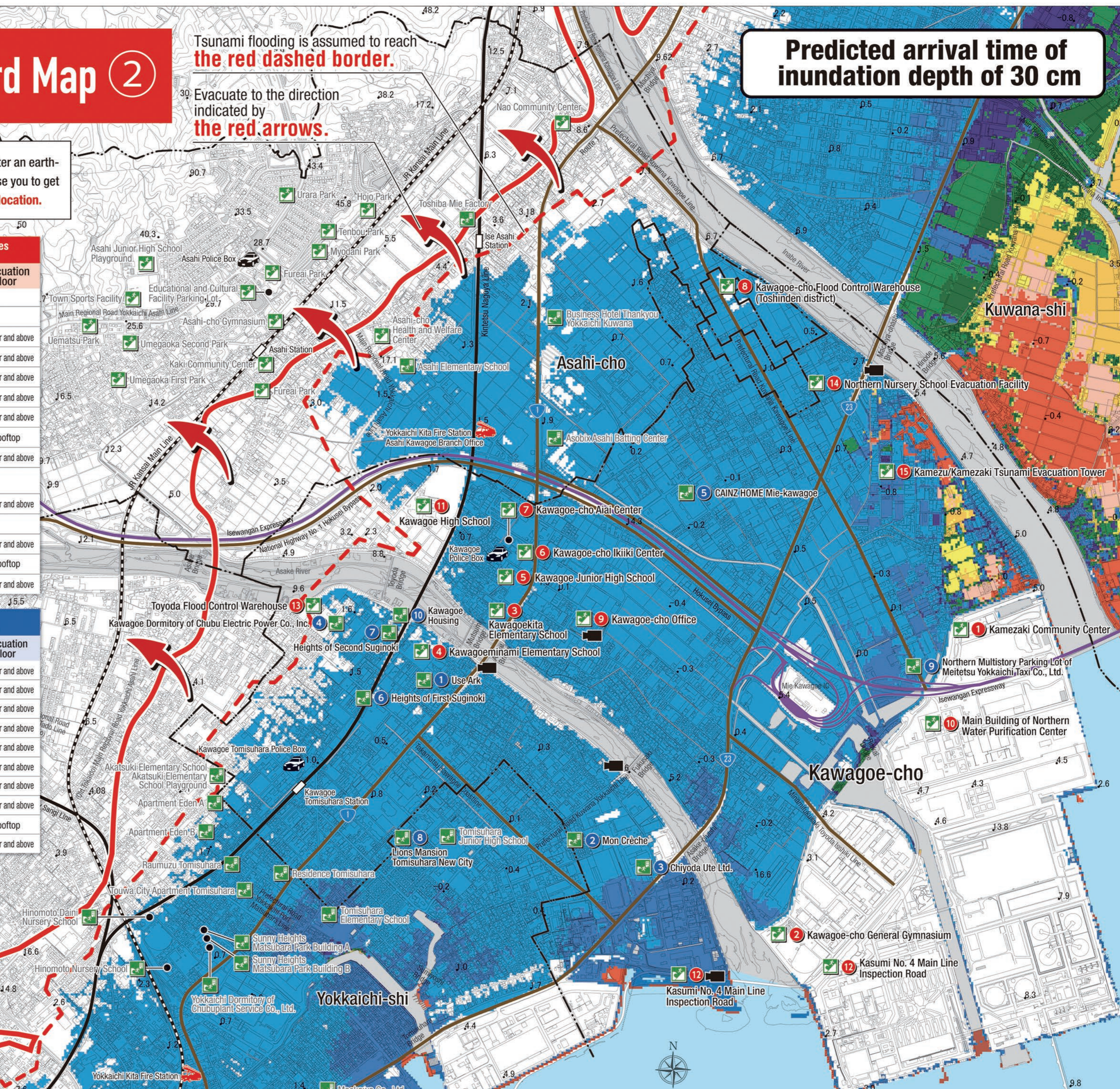
Designated emergency evacuation sites for tsunami

No.	Facilities	Evacuation floor
1	Kamezaki Community Center	
2	Kawagoe-cho General Gymnasium	
3	Kawagoekita Elementary School	2 nd floor and above
4	Kawagoeminami Elementary School	2 nd floor and above
5	Kawagoe Junior High School	2 nd floor and above
6	Kawagoe-cho Ikiki Center	2 nd floor and above
7	Kawagoe-cho Aiai Center	2 nd floor and above
8	Kawagoe-cho Flood Control Warehouse (Toshinden district)	Roof top
9	Kawagoe-cho Office	2 nd floor and above
10	Main Building of Northern Water Purification Center	
11	Kawagoe High School	2 nd floor and above
12	Kasumi No. 4 Main Line Inspection Road	
13	Toyoda Flood Control Warehouse	3 rd floor and above
14	Northern Nursery School Evacuation Facility	Roof top
15	Kamezu/Kamezaki Tsunami Evacuation Tower	2 nd floor and above

Tsunami evacuation building

No.	Name of building	Number of floors	Evacuation floor
1	Use Ark	4	2 nd floor and above
2	Mon Crèche	7	2 nd floor and above
3	Chiyoda Ute Ltd.	Partly 4	2 nd floor and above
4	Kawagoe Dormitory of Chubu Electric Power Co., Inc.	4	2 nd floor and above
5	CAINZ HOME Mie-kawagoe	2	2 nd floor and above
6	Heights of First Suginoki	4	2 nd floor and above
7	Heights of Second Suginoki	5	2 nd floor and above
8	Lions Mansion Tomisuhara New City	9 - 13 - 14	4 th floor and above
9	Northern Multistory Parking Lot of Meitetsu Yokkaichi Taxi Co., Ltd.	2	Roof top
10	Kawagoe Housing	4	2 nd floor and above

- Evacuate to the area indicated by the red arrows by the time the tsunami is predicted to arrive.
- If it is difficult to evacuate to the areas indicated by the red arrows by the estimated arrival time of the tsunami, evacuate to a designated emergency evacuation site.
- These times should be used solely as a reference. Please evacuate as quickly as possible.



S=1:12,500
0 500 1000 1500m